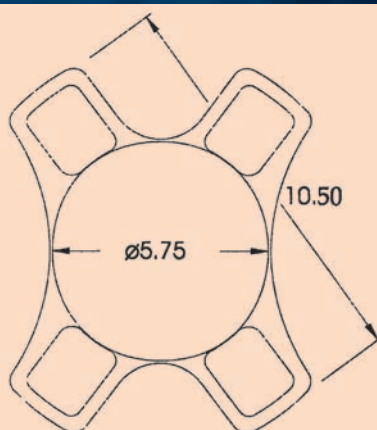


## i-Soft – Diabetic Lens



<b>Type</b>	<b>i-Soft</b> One-piece hydrophilic acrylic IOL
<b>Optic size</b>	5.75 mm
<b>Overall length</b>	10.5 mm
<b>Haptic angulation</b>	0°
<b>Optic</b>	Biconvex / Spherical
<b>Central thickness</b>	0.93 mm (+20.0 Dpt.)
<b>Design</b>	360° square edges
<b>Material</b>	Hydrophilic acrylic copolymer 26% water
<b>Available diopters</b>	0.0 Dpt. to +30.0 Dpt. in 0.5 Dpt. increments
<b>Sterilization</b>	Steam autoclaved
<b>Refractive index</b>	1.46
<b>Estimated A-Constant</b>	118.8
<b>Estimated anterior chamber depth</b>	4.96 mm
<b>Recommended incision size</b>	2.5 mm
<b>Recommended injector (reusable)</b>	Injector: Titanium 1-hand use Cartridge: i-Glide cartridge set 2.2
<b>Recommended injector-sets (disposable)</b>	i-Ject injector + i-Glide cartridge set 2.2